

# Dwaraka Nilayam

*Foundation to  
your dreams...*



A prestigious project from

  
**ROYAL INFRA**

# *Dwaraka Nilayam*



*Foundation to  
your dreams...*



# Specifications

Foundation	R.C.C. Framed structure
Wall	9" External, 4 1/2" Internal Brick walls
Doors	Main door teak wood Polished. Internal door teak wood frames and flush door shutters
Windows	Teak Wood frames and shutters with pin head glass
Flooring	2'X2' Vitrified Tiles
Kitchen	Granite stone Kitchen platform and ceramic tile dadoing upto 2' height
Electrical	Concealed standard copper wiring adequate no of points with quality fittings, telephone and T.V. points in M'bed room and Hall.
Toilets	All toilets provided with Indian (or) European style water closet, glazed ceramic tiles dadoing upto 7' height
Sanitary	Quality sanitary ware
Paints	Emulsion paints for Internal walls and Cement based paint for External walls. Internal doors & windows are with enamel paints.
Cub-Boards	Cub-boards with RCC planks, Maximum upto 20% of the plinth area.
Water	24 hrs. water supply from bore well and water sump. Separate over head water tanks.
Lift	6 persons standard lift will be provided.
Parking	Two wheeler parking will be provided
Generator	Back-up supply for Lift, Water Motor and Common area lighting.

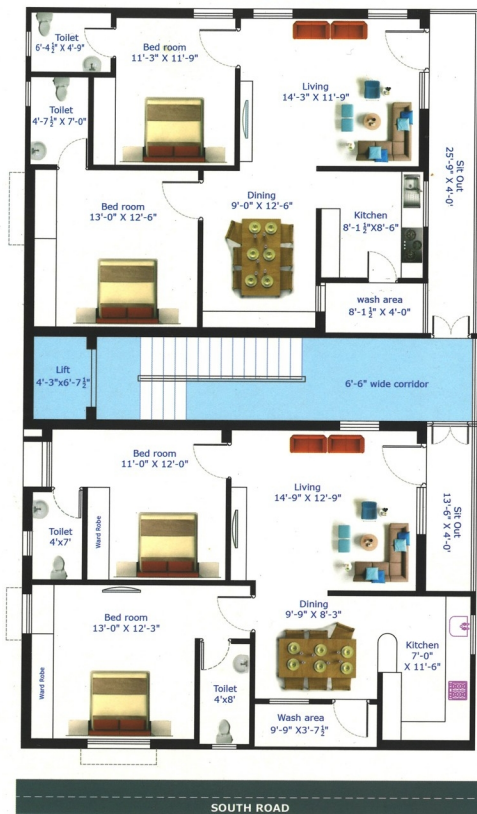
- Owner's Cost
- ❖ Additions or alternations to the above specifications.
  - ❖ Car Parking, Registration, Electrical and Municipal Water Deposits.
  - ❖ VAT, Service Tax, Labour Cess and any other Govt. Charges.





## TYPICAL FLOOR PLAN

*Dwaraka Nilayam*



2 BHK FLATS

1175 Sq.ft.

*Highlights*

- ♦ 100% Vaastu ♦ Lift & Generator ♦ Promoted by experienced professionals
- ♦ Pollution free green environment ♦ Children Play Area ♦ Around the clock water supply

# Location Plan

(Not to scale)



## Site Address

*Dwaraka Nilayam*

NGO Colony, 1st Lane,  
Venugopal Nagar, GUNTUR - 522004.

## Builders & Developers



11<sup>th</sup> Lane, Srinivasaraothota, Guntur.

**P. Khasim Khan** 92464 83959  
**Ch. Srinivas** 8978695999  
**Y. Ravi Kiran** 98485 19456



Architect

**K.S.R. ASSOCIATES**

Consulting Engineers & Interior Designers

Gunnus grand, Kundula Road, Brundavangardens,  
GUNTUR-522007, Ph : 0863-2252589

e-mail : ksr\_associate@yahoo.com