



# Lemon Tree Park

APARTMENT'S BLOCK - A



Approved by



P07430494159

Prestigious project from

**ARK BUILDERS & DEVELOPERS**

**3BHK - 1760 sq.fts**

**2BHK - 1220 sq.fts**

Luxury Apartments

@ VINUKONDA



# Lemon Tree Park

APARTMENT'S BLOCK - A



**ARK**  
**BUILDERS & DEVELOPERS**

**ARK BUILDERS & DEVELOPERS**

P.KHASIM KHAN <small>B.E</small>	- 92464 83959
SHAIK AHMMAD ALI <small>B.A</small>	- 98491 97313
PENDELA KIRAN KUMAR <small>B.Com</small>	- 94400 16399
ITALAPURAM SAIDA <small>M.Sc</small>	- 99129 17666

# TYPICAL FLOOR PLAN G+4

2 & 3 BHK Luxury  
Apartments

@ VINUKONDA



**ARK**

**BUILDERS & DEVELOPERS**

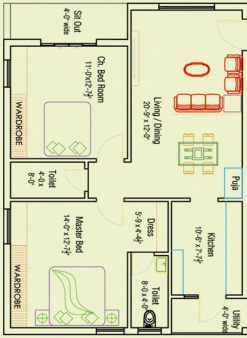
*Lemon Tree Park*

**APARTMENT'S PHASE - 1 & II**

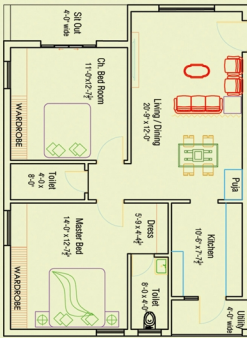
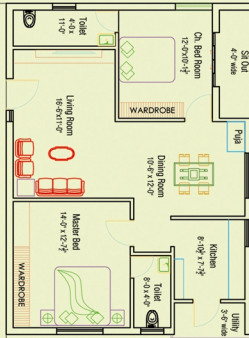
## Highlights

- Deluxe Quality
- 100% Vaasthu
- No common walls
- Elevation with good aesthetics
- Stilt Car Parking
- 24 hr Water Supply
- Quality material-Fine Finishing
- Safe and Secure Investment
- Termite Treated wood
- Power Back-up common area
- Very Experienced Builders
- Pollution free atmosphere
- 3 Phase Electrical Connection
- Electrical fittings all are **HAVELLS**
- Dedicated Beautiful land scaping with in premises as gated community

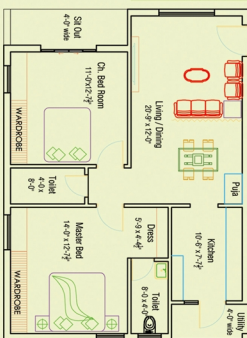
Approved project By:



6'-7" wide Corridor

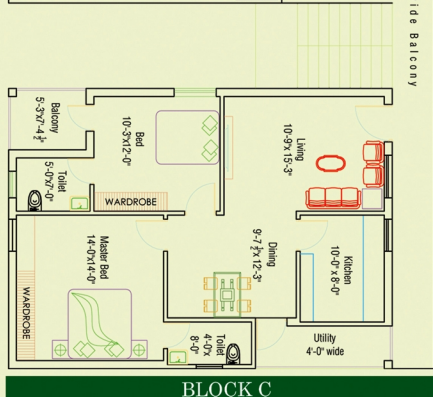
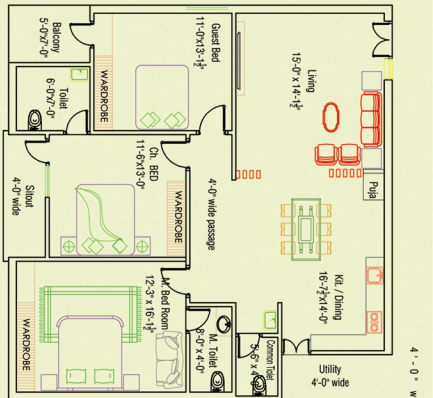
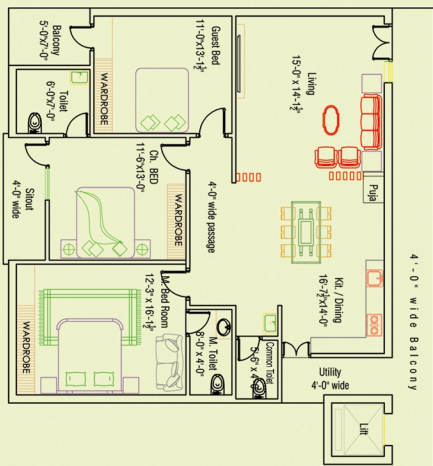


6'-7" wide Corridor



**BLOCK A**





# SPECIFICATIONS



## FOUNDATION &

**STRUCTURE** : RCC Framed Structure with **M25** grade concrete.

**WALLS** : Outer walls 9" thick and inner walls 4.5" thick country red brick wall with CM.

**PLASTING** : Cement mortar and two coats of plastering with sponge finish inside and outside.

**MAIN DOOR** : **Sudhan** Teak wood frames with Teak wood paneled shutters and brass hinges are fittings.

**OTHER DOORS** : Teak wood frames with flush shutters and SS fittings

**WINDOWS** : Frames & shutters WPVC with glass & safety grills.

**CUPBOARDS** : Cupboards with both side laminated **Action Texa** with SS handles of nearly **30%** of plinth area.

**CEILING** : Ceiling with **Gypsum (Gyproc)** including 6w lights.

**FLOORING** : 2' x 2' Double Charged Vitrified tiles flooring.

**KITCHEN** : Polished black granite platform with Stainless steel sink and 3' height digital tiles dadoing.

Bore & Municipal **ESSESS** water taps. Provision for cabinets.

**ELECTRICAL** : Concealed Havells/Finolex copper wiring of suitable gauge with adequate light and power points.

Provision of socket for Telephone, Cable TV, Refrigerator, Mixer, Geyser with modular **Legrand** switches. A/C point provision in Hall & Two bedrooms. Inverter wiring provision provided.

**FANS & LIGHTS** : **Havells or Equivalent**, Switches and MCP's **Legrand**

**TOILETS** : All toilets are with EWC **Paryware / Cera** company. Anti-skid ceramic tiles flooring **Appoxy** digital tiles dadoing up to door height (6'0") with standard make sanitary fittings and **ESSESS** Bath fittings.

**PLUMBING** : All water pipelines are with **CPVC Ashirvad** pipes. **CERA / Equivalent** make wash basin in dining area.

**PAINTING** : Internal - Plastering with cement mortar followed by **Birla** wall care followed by two coats of **Premium emulsion** of asian paints over a coat of primer.

External - Plastering with cement mortar followed by wall care and texture finish with **Asian ultima emulsion** of asian paint over a coat of primer.

**EXTRAS** : AP TRANSCO, Generator, Lift , **CC Cameras** and Car parking.

**NOTE** : Registration charges, GST and any other taxes & Fees levied by the Govt. are extra and have to be borne by the purchaser.

## Site Address

### Lemon Tree Park Apartment

D.No: 23-1325, Ward -12

Taraka Rama Nagar, Karampudi Road

Vinukonda - 522647

ANDHRA PRADESH

## ARK BUILDERS & DEVELOPERS

Plot No:252,

6<sup>th</sup> Line, NGGO'S Colony

GUNTUR, ANDHRA PRADESH

mail : [khan.pandu@gmail.com](mailto:khan.pandu@gmail.com)

## Architect

**Rafi,S.M.**

94405 39026

**SV Consultants**

architects - planners - engineers  
#11-263, First Floor, Near Poojya Public School,  
Ring road, Patashiparam, Guntur - 5  
[svconsultantsguntur@gmail.com](mailto:svconsultantsguntur@gmail.com)

## Structural Engineer

### PVS STRUCTECH

I STRUCTURAL ENGINEERS I

Vishnu Sai Pothuru, M.Tech., (U.K)

Kothapet, Guntur.

Cell : 99080 44100.