



Lemon Tree Park

APARTMENT'S BLOCK - B



Approved by



P07430114218

Prestigious project from

ARK BUILDERS & DEVELOPERS

3BHK - 1760 sq.fts

2BHK - 1220 sq.fts

Luxury Apartments

@ VINUKONDA



Lemon Tree Park

APARTMENT'S BLOCK - B



ARK

BUILDERS & DEVELOPERS

ARK BUILDERS & DEVELOPERS

P.KHASIM KHAN **B.E** - 92464 83959

SHAIK AHMMAD ALI **B.A** - 98491 97313

PENDELA KIRAN KUMAR **B.Com** - 94400 16399

ITALAPURAM SAIDA **M.Sc** - 99129 17666

TYPICAL FLOOR PLAN G+4

2 & 3 BHK Luxury
Apartments

@ VINUKONDA



ARK

BUILDERS & DEVELOPERS

Lemon Tree Park

APARTMENT'S PHASE - I&II

Highlights

- Deluxe Quality
- 100% Vaasthu
- No common walls
- Elevation with good aesthetics
- Stilt Car Parking
- 24 hr Water Supply
- Quality material-Fine Finishing
- Safe and Secure Investment
- Termite Treated wood
- Power Back-up common area
- Very Experienced Builders
- Pollution free atmosphere
- 3 Phase Electrical Connection
- Electrical fittings all are **HAVELLS**
- Dedicated Beautiful land scaping with in premises as gated community

Approved project By:



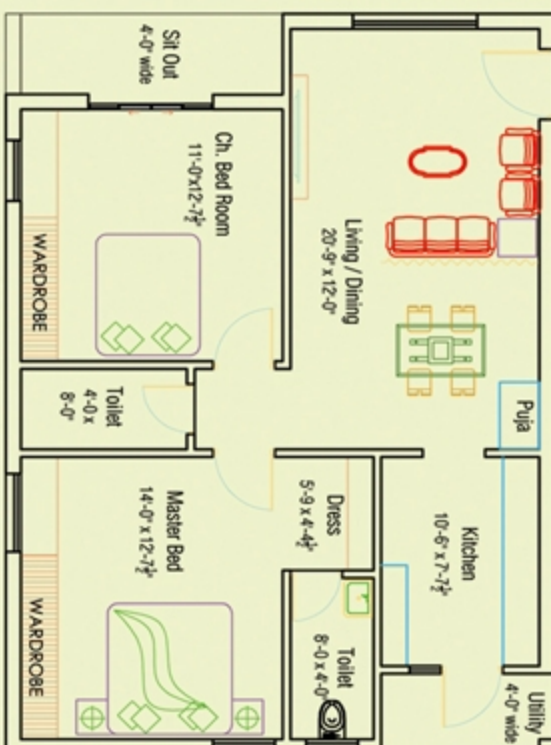
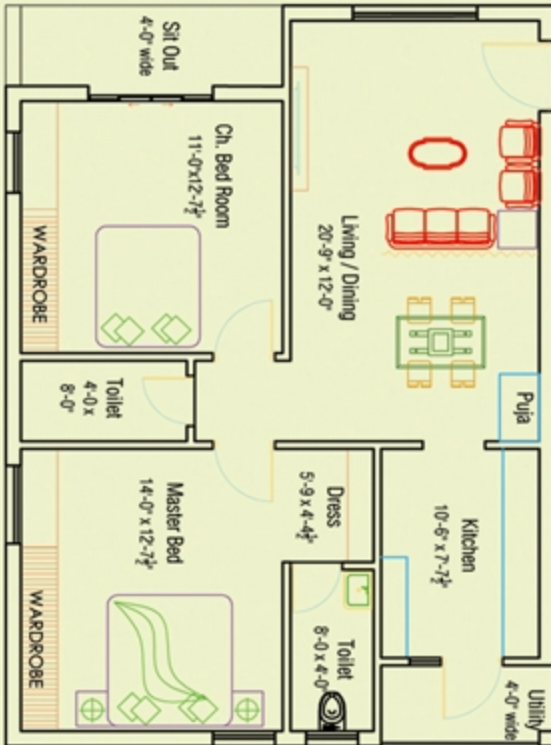
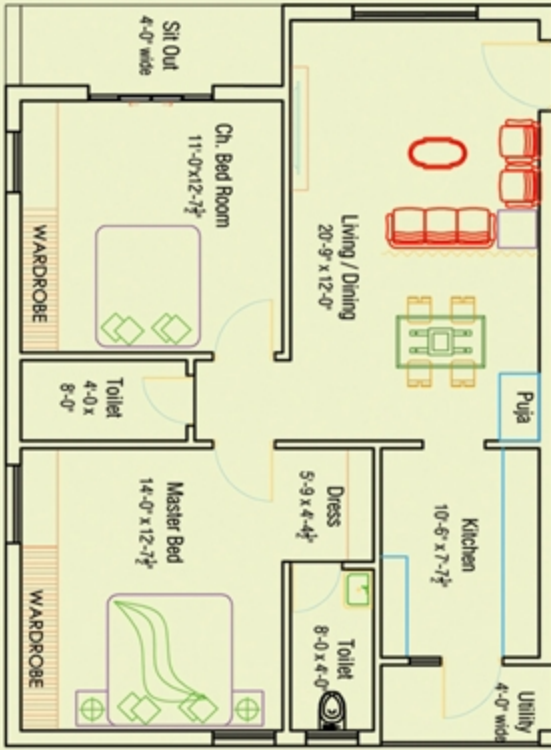
Building homes. Nurturing relationships.

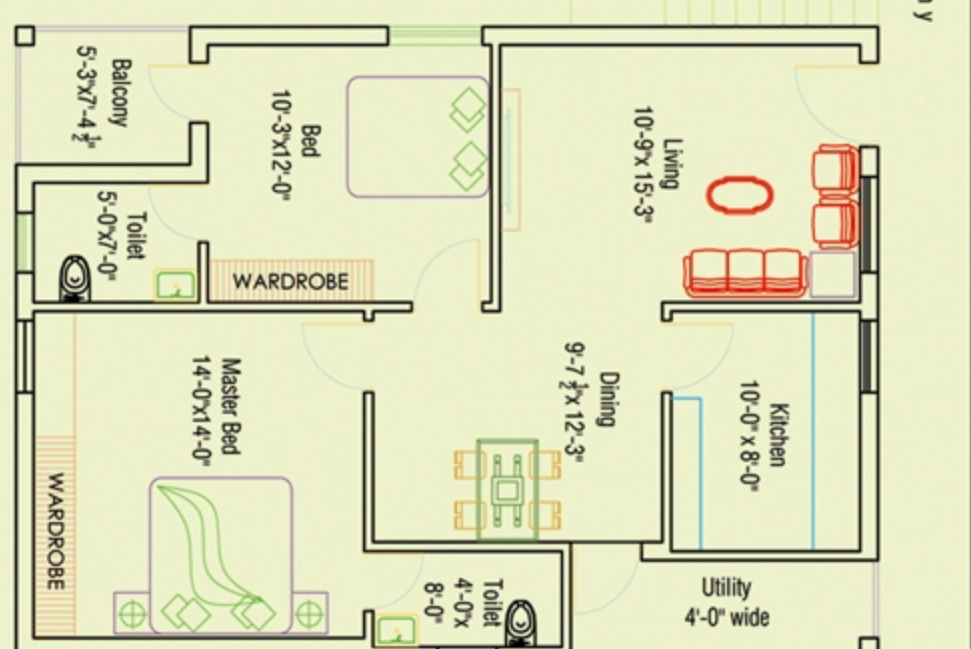
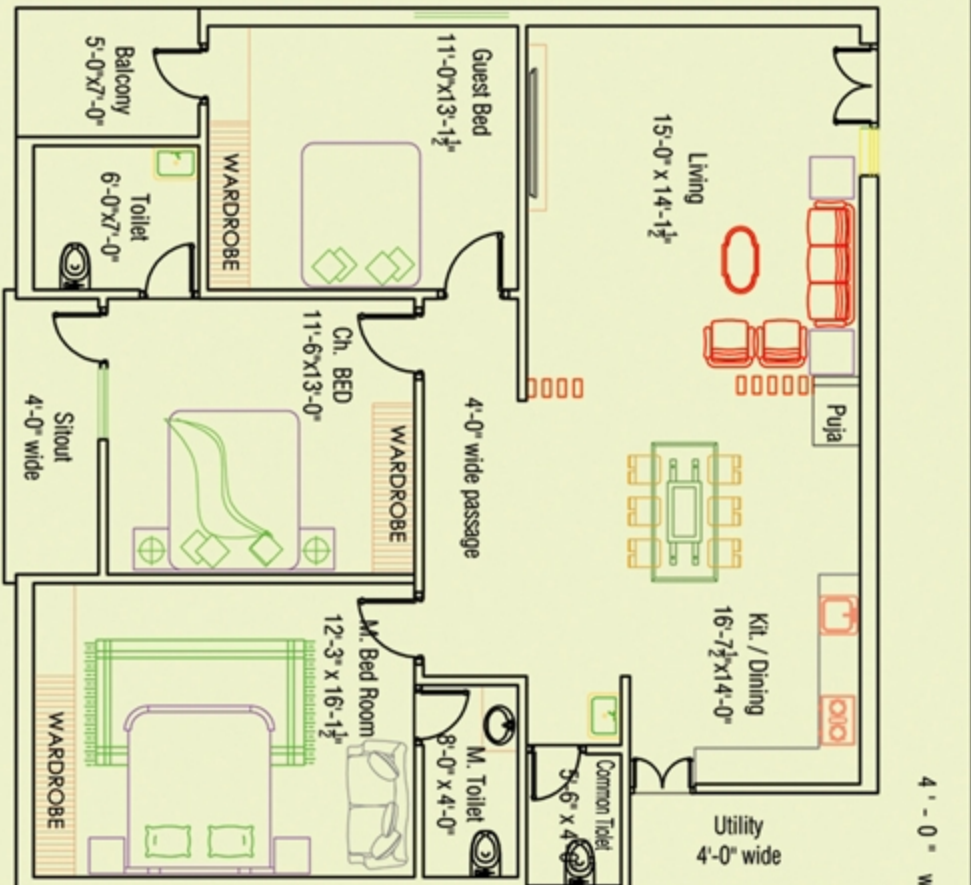
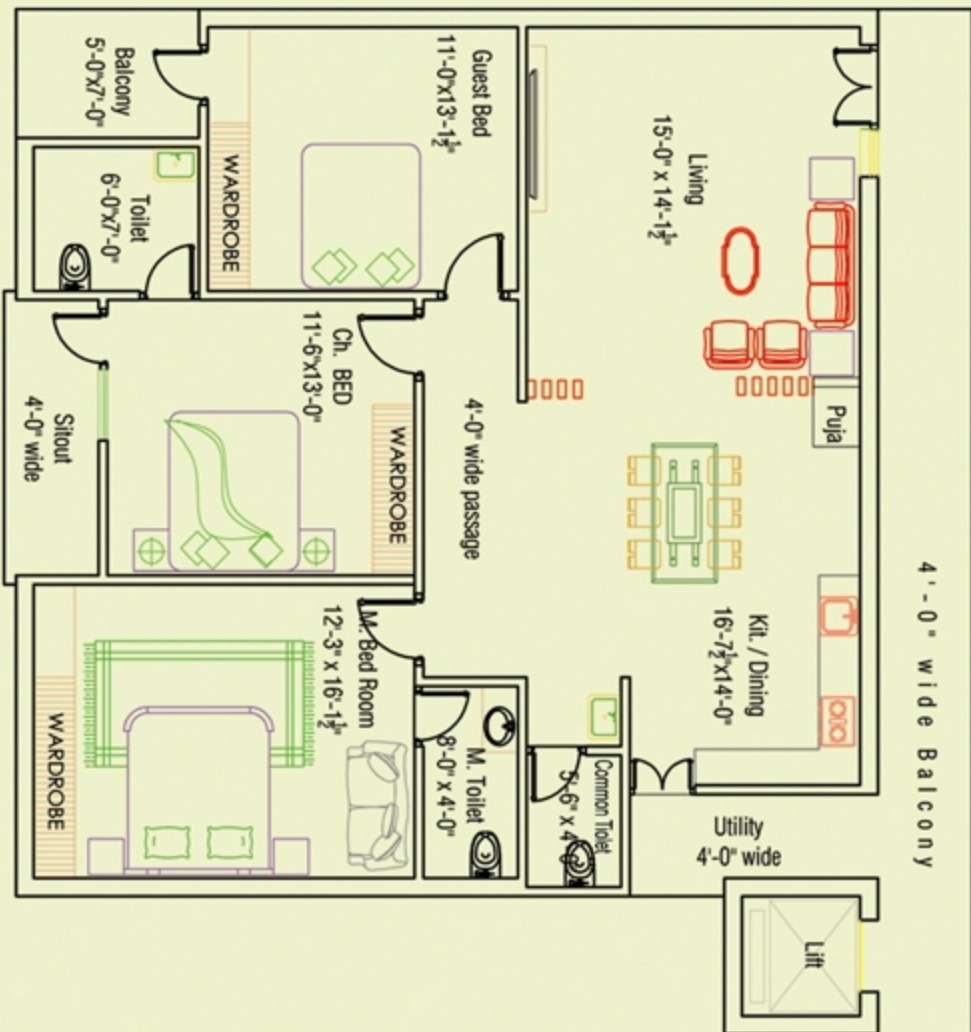


6'-7" wide Corridor

6'-7" wide Corridor

BLOCK A





BLOCK C



SPECIFICATIONS



FOUNDATION &

STRUCTURE : RCC Framed Structure with **M25** grade concrete.

WALLS : Outer walls 9" thick and inner walls 4.5" thick country red brick wall with CM.

PLASTING : Cement mortor and two coats of plastering with sponge finish inside and outside.

MAIN DOOR : **Sudhan** Teak wood frames with Teak wood paneled shutters and brass hinges are fittings.

OTHER DOORS : Teak wood frames with flush shutters and SS fittings

WINDOWS : Frames & shutters WPVC with glass & safety grills.

CUPBOARDS : Cupboards with both side laminated **Action Texa** with SS handels of nearly **30%** of plinth area.

CEALING : Cealing with **Gypsum (Gyproc)** including 6w lights.

FLOORING : 2' x 2' Double Charged Vitrified tiles flooring.

KITCHEN : Polished black granite platform with Stainless steel sink and 3' height digital tiles dadoing.

Bore & Municipal **ESSESS** water taps. Provision for cabinets.

ELECTRICAL : Concealed Havells/Finolex copper wiring of suitable guage with adequate light and power points.

Provision of socket for Telephone, Cable TV, Refrigerator, Mixer, Geyser with modular **Legrand** switches.

A/C point provision in Hall & Two bedrooms. Inverter wiring provision provided.

FANS & LIGHTS : **Havells or Equivalent**, Switches and MCP's **Legrand**

TOILETS : All toilets are with EWC **Paryware / Cera** company. Anti-skid ceramic tiles flooring **Appoxy**

digital tiles dadoing up to door height (6'0") with standard make sanitary fittings and **ESSESS** Bath fittings.

PLUMBING : All water pipelines are with **CPVC Ashirvad** pipes. CERA / Equivalent make wash basin in dining area.

PAINTING : Internal - Plastering with cement mortar followed by **Birla** wall care followed by two coats of **Premium emulsion** of asian paints over a coat of primer.

External - Plastering with cement mortar followed by wall care and texture finish with **Asian ultima emulsion** of asian paint over a coat of primer.

EXTRAS : AP TRANSCO, Generator, Lift , **CC Cameras** and Car parking.

NOTE : Registration charges, GST and any other taxes & Fees levied by the Govt. are extra and have to be borne by the purchaser.

Site Adress

Lemon Tree Park Apartment

D.No: 23-1325, Ward -12

Taraka Rama Nagar, Karampudi Road

Vinukonda - 522647

ANDHRA PRADESH

ARK BUILDERS & DEVELOPERS

Plot No:252,

6th Line, NGGO'S Colony

GUNTUR, ANDHRA PRADESH

mail : khan.pandu@gmail.com

Architect

Rafi,S.M.

94405 39026

SV Consultants
architects - planners - engineers

#11-253, First Floor, Near Poojitha Public School,
Ring road, Pattabhipuram, Guntur - 6
svconsultantsguntur@gmail.com

Structural Engineer

PVS STRUCTECH

I STRUCTURAL ENGINEERS I

Vishnu Sai Pothuru, M.Tech., (U.K)

Kothapet, Guntur.

Cell : 99080 44100.

Note : This Brochure is only a conceptual presentation of the project and not a legal offering.

Developers reserve the right to change, alter, modify plan, elevation and specification time to time as deemed it.